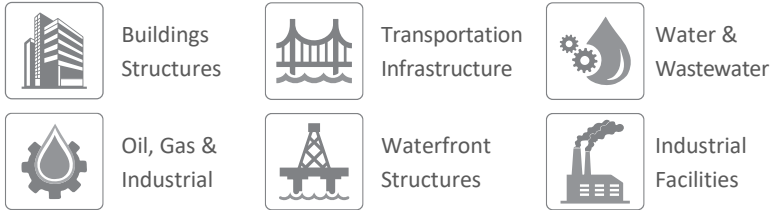


TechnoGrout™FC

Fiber Reinforced Cementitious Grout

PRODUCT DESCRIPTION

TechnoGrout™FC is a Cementitious grout reinforced with Fibers to provide excellent impact and vibration resistance. Formulated from a blend of high strength Portland cement, graded and micro Fiber Aggregates, TechnoGrout™FC has improved mechanical properties and durability compared to conventional cementitious grout.



TECHNICAL DATA (DRY FIBER)

	Unit	TechnoGrout™FC
Density	kg/l	2.3
Compressive Strength (28 days)	MPa	88
Tensile Strength (28 days)	MPa	20
Pot Life	min	25
Initial Set	hr.	5-8
Final Set	hr.	6-9
Mixing Ratio (Parts A: B) by Weight	-	water per powder = 16% by weight

ADVANTAGES

- Contain fibers - Improved mechanical properties compared to conventional cementitious grout.
- Durable with high final strength
- Easy application, mix with water
- Rapid strength development
- Easy to apply
- Pump able
- Non-shrinking

TYPICAL USES

- Machinery Base Plates
- Wind turbine tower bases
- Centrifugal compressors
- Crane rails
- Crusher - Ball Mills
- Structure that subjected to high vibration, torque and impact

MIXING

Place measured quantity of clean potable water (depend on the required consistency) in a clean mixing container add FCG

and TM slowly. Mix with a slow speed mixer for 3 minutes to a smooth, stiff consistency.

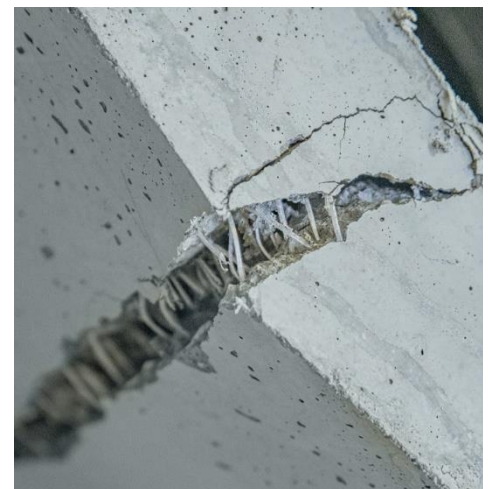
INSTALLATION PROCEDURE

PREPARATION OF SUBSTRATE

All surfaces to be in contact with TechnoGrout™FC product shall be free of oil, grease, laitance and other contaminants. Concrete must be clean, sound, dry and roughened to ensure a good bond. Formwork shall be constructed of rigid non-absorbent materials, securely anchored, liquid-tight and strong enough to resist forces developed during grout placement. The clearance between formwork and baseplate shall be sufficient to allow for a head box. The clearance for remaining sides shall be 25- 50 mm. Areas where bond is not desired must be treated with paste wax or polyethylene. Isolation joints may be necessary depending on for dimensions.

APPLICATION

TechnoGrout™FC product may be Poured into place. Note that all grout shall be placed from one side to the other, maintaining contact with the bottom of the baseplate at all times



CAUTION

This product may cause skin irritation. Do not inhale vapors. Provide adequate ventilation. Protect against contact with skin and eyes. Wear rubber gloves, long sleeve shirt, goggles with side shields. In case of contact with eyes, flush repeatedly with water and contact a physician. Areas of skin contact should be promptly washed with soap and water. Do not take internally.

FAIRST AID

Skin

Wash fibers off skin with water and soap. If fibers are embedded in the skin, remove with tweezers. Discard clothing that may contain embedded fibers. Seek medical advice if exposure results in adverse effects.

Eyes

Immediately flush with a continuous water stream for at least 20 minutes. Washing immediately after exposure is expected to be effective in preventing damage to the eyes. Seek medical advice.

Inhalation

If there is inhalation exposure to the fibers of this product, remove source of exposure and move victim to fresh air. If victim is not breathing, give artificial respiration. If there is breathing difficulty, give oxygen. Seek medical advice for any respiratory problems.

Ingestion

Ingestion is not a likely means of exposure for this product. If ingestion does occur, do not induce vomiting. Give nothing by mouth if victim is unconscious. Seek medical advice.

DISCLAIMER: All guidelines, recommendations, statements, and technical data contained herein are based on information and tests we believe to be reliable and correct, but accuracy and completeness of said tests are not guaranteed and are not to be construed as a warranty, either expressed or implied. It is the user's responsibility to satisfy himself, by his own information and test, to determine suitability of the product for his own intended use, application and job situation and user assumes all risk and liability resulting from his use of the product. We do not suggest or guarantee that any hazard listed herein are the only ones which may exist. Neither seller nor manufacturer shall be liable to the buyer or any third person for any injury, loss or damage directly or indirectly resulting from use of, or inability to use, the product. Recommendations or statements, whether in writing or oral, other than those contained herein shall not be binding upon the manufacturer, unless in writing and signed by a corporate officer of the manufacturer. Technical and application information is provided for the purpose of establishing a general profile of the material and proper application procedures. Test performance results were obtained in a controlled environment and Technopol products makes no claim that these tests or any other tests, accurately represent all environments.
